



intAct Bike-Power Classic

Low-maintenance lead-acid battery | dry-charged, acid pack included

Art.No.

00514S

Japancode

6N4.5-10

Volt	6V
Capacity	4 Ah (c20)
CCR -18°C (EN)	10 A (EN)
Electrolyte	diluted sulphuric acid
Electrolyte density	1,28 +/- 0,01 kg/l (25°)
Size (LxWxH)	124 x 50 x 106 mm
Weight	0,81 kg
Pos. of Terminal	0
Terminal	B
Entgasung	5

Usage



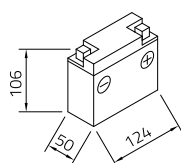
Powerful and sustainable

The solid battery without frills delivers high starting power, with regular maintenance it achieves a long service life and has excellent recycling properties. Our recommendation for an inexpensive standard motorcycle battery.

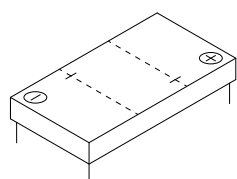
- » **Reliable starting power at an excellent price.**
- » **Replacement recommendation** for broken flooded battery.
- » **Central degassing.**
- » **Only to be installed upright**, as flooded battery with vent caps.



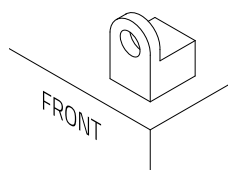
Size



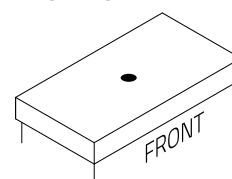
Pos. of Terminal 0



Terminal B



Entgasung 5



As of 31.07.2025