



intAct Start-Power

Calcium or hybrid battery (Ca/Ca or Sb/Ca)

Art.No.

52430SMF

Japancode

U1

Volt	12V
Capacity	24 Ah (c20)
CCR -18°C (EN)	300 A (EN)
Electrolyte	diluted sulphuric acid
Electrolyte density	1,28 +/- 0,01 Kg/l (25°C)
Size (LxWxH)	196 x 130 x 184 mm
Weight	8,2 kg
Pos. of Terminal	1
Terminal	4
Bodenleiste	-

Usage



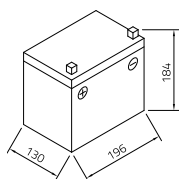
Top performance at a great price

Developed for performance and extreme high-current capability at an absolutely perfect price-performance ratio. For almost all standard cars without many additional installations and other electrical consumers. Our recommendation for standard applications with low requirements and the best price-performance ratio.

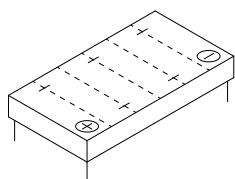
- » **Powerful and reliable.**
- » **Double lid for increased leakage protection and gas condensation** (gaseous electrolyte condenses in the labyrinth lid and remains in the circuit).
- » **Filled and charged. Ready for immediate use.**
- » **Maintenance-free. No refilling of water necessary.**



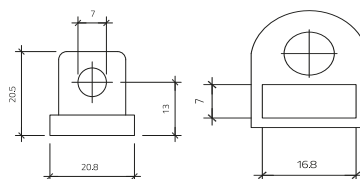
Size



Pos. of Terminal 1



Terminal 4



Bodenleiste -

As of 18.08.2025