



# intAct US-Power

Closed calcium battery (Ca/Ca) with expanded metal grids | filled and charged | maintenance-free

Art.No.

## 56010GUG

Volt	12V
Capacity	60 Ah (c20)
CCR -18°C (EN)	600 A (EN)
Electrolyte	diluted sulphuric acid
Electrolyte density	1,28 +/- 0,01 Kg/l (25° C)
Size (LxWxH)	230 x 179 x 186 mm
Weight	13,2 kg
Pos. of Terminal	1
Terminal	US
Bodenleiste	B01



### Usage



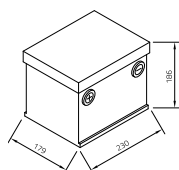
## For American vehicles

The **intAct US-Power batteries** are modern high-performance batteries, **specifically designed for US vehicles**. Thanks to their adapted dimensions and front terminal connections, they optimally meet the requirements of American models. These calcium starter batteries offer **excellent cold-start performance** with **minimal self-discharge** and ensure reliable starting. Supplied filled and charged, they are **immediately ready for use and maintenance-free** - no need to top up with water.

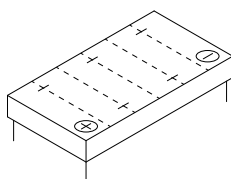
### Advantages at a glance:

- » Specially developed for US vehicles
- » US front terminal (internal thread type 56010/57010) or A-cone terminal (DIN 60095 T2, type 58010)
- » **Excellent cold start performance**
- » **Minimal self-discharge**
- » Immediately **ready for use and maintenance-free**

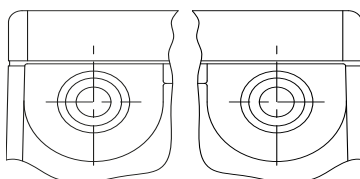
Size



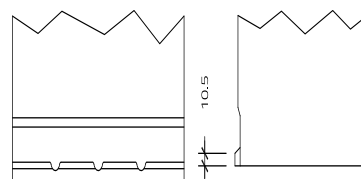
Pos. of Terminal 1



Terminal US



Bodenleiste B01



As of 16.06.2026