



# intAct GEL-Power

Sealed GEL battery with grid plates | electrolyte gel-bonded | filled and charged | absolutely maintenance-free

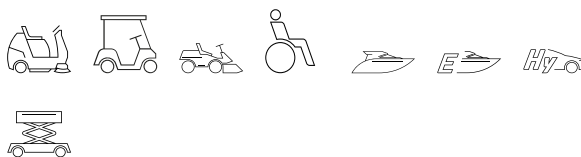
Art.No.

## GEL-14

Volt	12V
Capacity	12 AH (c5), 14 AH (c20), 16 AH (c100)
CCR -18°C (EN)	-
Electrolyte	diluted sulphuric acid
Electrolyte density	1,28 +/- 0,01 Kg/l (25° C)
Size (LxWxH)	150 x 87 x 145 mm
Weight	5 kg
Pos. of Terminal	1
Terminal	F-M5
Bodenleiste	-



### Usage

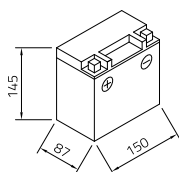


### Easy to maintain in use

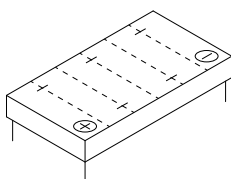
Perfectly suited as a traction or supply battery for a wide range of applications in private and business environments. Leak-proof, absolutely maintenance-free and robust thanks to the electrolyte defined in gel. Our recommendation for medium-cycle applications where leak-proof and maintenance-free operation are important.

- » For medium to heavy cyclical use. 400 - 700 cycles according to IEC 254-1.
- » Longer service life than flooded lead-acid batteries.
- » High vibration resistance.
- » Low self-discharge.
- » Available in 4-volt, 6-volt and 12-volt versions.
- » VRLA battery with gas recombination and safety valves, refilling is neither possible or necessary.
- » Sealed GEL battery with grid plates.

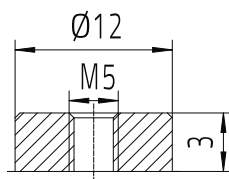
Size



Pos. of Terminal 1



Terminal F-M5



Bodenleiste -

As of 02.04.2025